

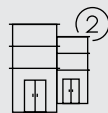
Take your business  
to the high street

NORTH POINT  
**TWO**  
at NAHAPARK



# Connect

*Surrounded by high-end residential area,  
Fortune 500 companies, important  
transit development and international  
standard facilities.*



North Point TWO will be built to continue the success story of North Point, the first initiated multi business under one building.



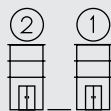
North Point TWO is within a walking distance from NavaPark's high-end residential area — the most sought-after luxury homes in BSD City.



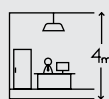
BSD City will be projected as a vibrant city, where green living, connectivity as well as good transportation will be built based on international standard in more than 6,000 Ha.

# CORe

*CORe (Commerce, Office, and Retail Space), a fresh business concept where each floor can be rented by different tenants working side by side.*



Each floor has individual access with independent lift lobby and corridor.



High-end design facade with 4m ceiling, making the ground and first floor instantly recognizable from the street.



Premium retail space with exclusive lobby to welcome guests.

# Bringing high street to NavaPark



North Point TWO is inspired by the high street in London, New York and Paris, an area where important business, retails and stores are located.



Located in the busy area at the grand boulevard of BSD City, North Point TWO aims to create an inspiring and stylish space for unlimited business opportunities.

# Expanding business potentials



Opening up the opportunity for any business to reach their utmost potential.



Fine dining restaurant for high-end neighborhood.



Relax and unwind at a state-of-the-art yoga studio.



Modern supermarket provides fresh produce and groceries.



Fashionable beauty salon caters to every style needs.



Meet up and chat with friends at a stylish cafe.

# High class facilities



## Separate Vertical Access



Lift with individual entrance



Private lobby and corridor on every floor



Spacious layout and efficient arrangement for each floor



## Premium Retail Space with Exclusive Lobby to Welcome You



4 meters ground floor and first floor ceiling height



## Abundant Parking Lots



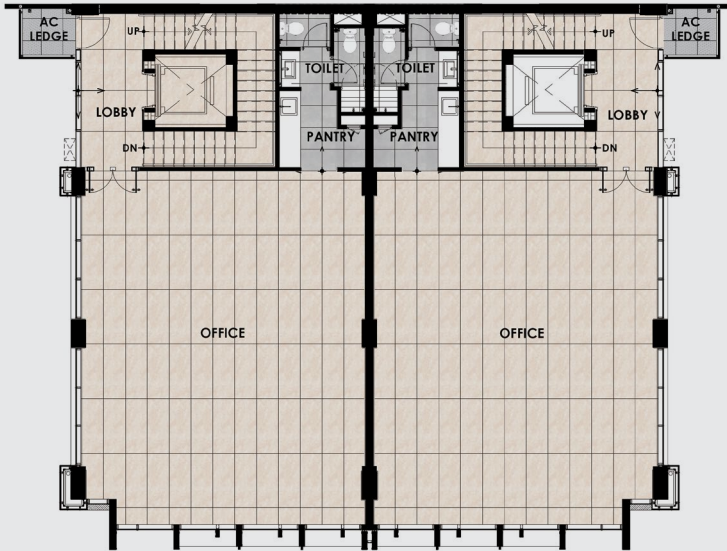
Guest Parking: 6 parking lots designated for each unit on ground floor and the basement



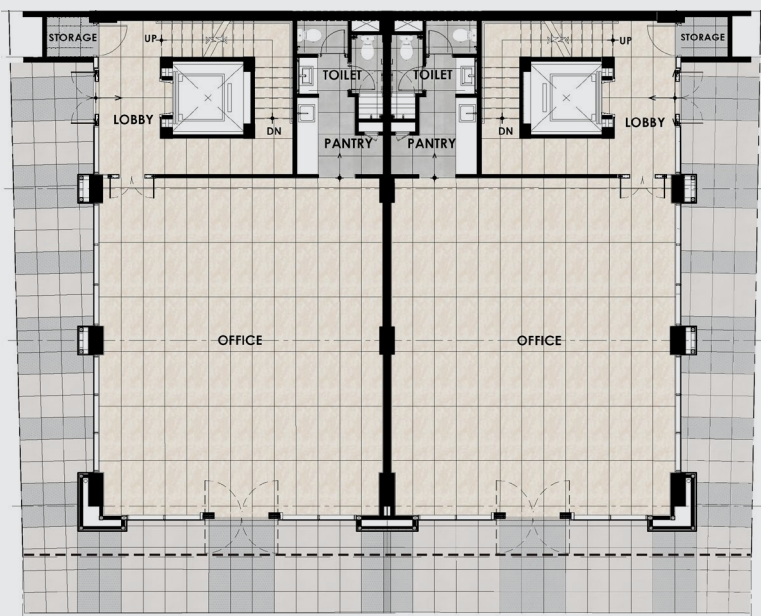
Private Parking: up to 6 lots/unit

# Floorplan

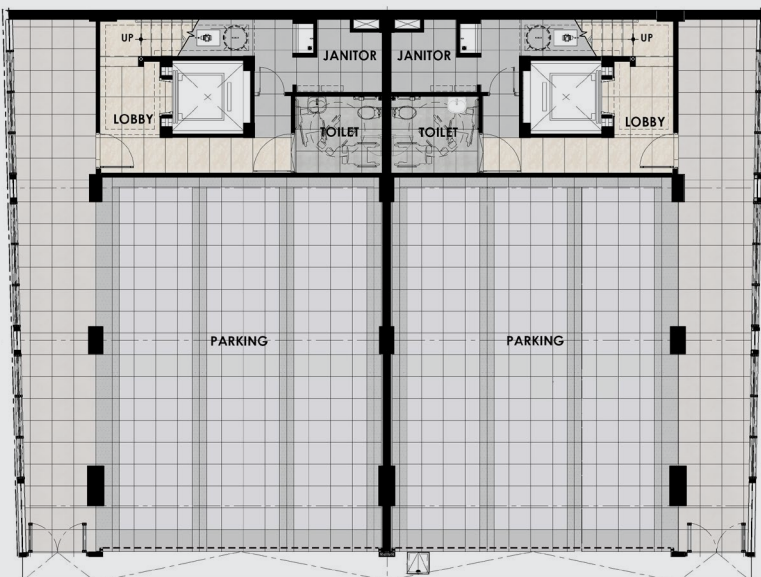
**Type Grand** – 4 Floors +1 Basement  
**Type Premium** – 5 Floors + 1 Basement



Type Premium Typical Floor  
Type Grand Typical Floor



Ground Floor



Basement Floor

## LOCATION



Located at the heart of BSD City's golden triangle with more than 450,000 people commute around the area.

## SPECIFICATION

### Foundation

- Concrete Pile

### Main Structure

- Reinforced concrete

### Interior Wall Finishes

- Plaster & paint
- Homogeneous tile on lift frontage

### Ceiling

- Gyptile & gypsum board in paint finish

### Roof

- Corrugated Zinalume/metal roof with insulation
- Concrete roof deck

### Main Door

- Frameless tempered glass

### Facade

- Clear & reflective glass
- Stone cladding/ACP/GRC

### Floor Finishes

- GF main area: Local marble cut to size
- GF Walkway: Non-slip homogeneous tile
- GF parking area & circulation: Asphalt and non-slip homogeneous tile at drop off area
- Typical floor: Homogeneous tile marble look alike

- Basement walkway: Non-slip homogeneous tile
- Basement garage area: Non-slip homogeneous tile
- Basement lift lobby: Homogeneous tile marble look alike
- Basement circulation & common parking area: Concrete with floor hardener

### Toilet

- Wall finishes: Homogeneous tile
- Floor finishes: Non-slip homogeneous tile
- Sanitary: TOTO or equivalent

### Lift

- Capacity of 630kg/8 persons

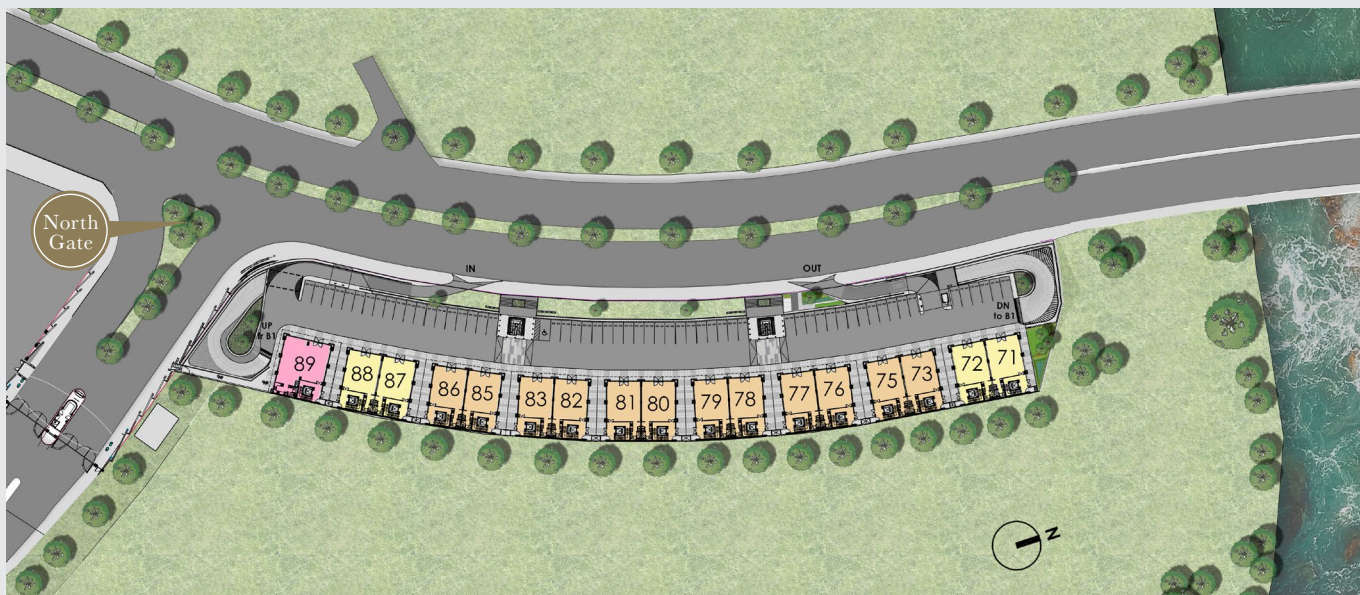
### Electricity

- 23,000 VA (Type Premium)
- 16,500 VA (Type Grand)

### MEP Provision

- Interior & exterior lighting
- Ground water tank + pump
- Roof tank + booster pump
- Grease trap per floor beneath pantry counter
- Waste water treatment system using Communal STP
- Sleeves on wall for AC pipes routing + power connection (1 unit at lift lobby; 2 units at hall area)

## SITEMAP



## MARKETING GALLERY

Jl. Grand Boulevard BSD City  
Tangerang Selatan  
Indonesia

## CONTACT

T. 021—2958 0282  
WA. 0881 7787 877  
W. navapark.id

## DEVELOPED BY



### DISCLAIMER

Neither the Developer nor its agents will be held responsible for any inaccuracies or omissions in the information contained in this brochure. The Developer does not accept responsibility for any errors or omissions or for any losses suffered by any person or legal entity resulting from the use of the information contained in this brochure, howsoever caused. The statements, visual representations, models, show units, displays and illustrations, photographs, art renderings and other graphic representations and references are intended to portray only artist impressions of the development and décor and cannot be regarded as accurate or representations of fact. All areas and other measurements are approximate measurements and are subject to change and final survey. All plans and models are not to scale unless expressly stated and are subject to amendment. All information, specifications, renderings, visual representations, measurements and plans are subject to change as may be required by us and/or the relevant authorities. The Sale and Purchase Agreement (SPA, also known as PPJB) shall form the entire agreement between the Developer and the Purchaser and shall supersede all statements, representations or promises made prior to the signing of the SPA and shall in no way be modified by any statements, representations or promises made by us or our agents which are not embodied in the SPA, whether before or after the signing of the SPA. Any explanation concerning the SPA and the development is for information purposes only and it is recommended that potential Purchasers seek independent legal advice with regard to the proposed purchase. Marble and granite are natural stone materials containing veins with tonality differences. There will be colour and markings caused by their complex mineral composition and incorporated impurities. While such materials can be pre-selected before installation, this non-conformity in the marble or granite cannot be totally avoided. Granite tiles are pre-polished before laying and care has been taken for their installation. Hence some differences may be felt at the joints. The tonality pattern of marble or granite selected and installed shall be subject to availability. Timber is natural material containing veins and tonal differences. Thus it is not possible to achieve total consistency of colour and grain in its selection and installation. Layout/location of kitchen cabinets, fan coil units and electrical points are subject to Developer's sole discretion and final design.